

KS&R's DIGITAL DISPATCH

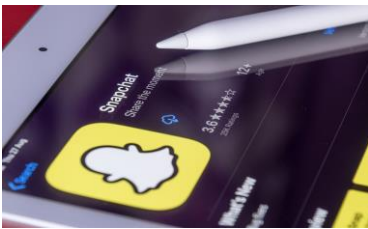
Delivered in your mailbox weekly, the *Digital Dispatch* serves as an aggregator of key news stories in the technology and media space that may be of interest to you and your organization.



AT&T Upgrades Its Fiber Network To Offer 2-Gig, 5-Gig Speeds

AT&T has boosted its existing fiber in parts of more than 70 metro areas around the U.S. to offer 2-Gig and 5-Gig symmetrical upload and download speeds.

[Learn more](#)



VersusGame Lands New Partnership With Snapchat

This strategic partnership will give VersusGame an expansive reach and access to Snapchat's audience of over 293 million daily users.

[Learn more](#)



Meta Has Built An AI Supercomputer It Says Will Be World's Fastest By End Of 2022

The company says its new AI Research SuperCluster, or RSC, is already among the fastest machines of its type and, when complete in mid-2022, will be the world's fastest.

[Learn more](#)



Netflix And Microsoft Show That Video Gaming Has Become Too Big For Tech Giants To Ignore

Gaming has jumped to the forefront of many people's attention as companies like Meta and Roblox build strategies around a vaguely defined immersive consumer computing strategy called the "metaverse," which will almost certainly involve gaming at some level.

[Learn more](#)

ABOUT US

KS&R is a nationally recognized market research firm that provides clients with timely, fact-based insights and solutions through industry-centered expertise. For more information, please visit www.ksrinc.com.

Click [here](#) connect.

Want to read more?

[Our Insights](#)